

# Visual Code Collection



## Visual Code™ Collection

---

AI, VR, robotics and smart everything. Hi-tech tools are sleek, enticing and fast, but they can be a distraction from creative thinking. Engagement with the natural world and real, “hi-touch” things like hand-crafted materials and goods, humanize experience, slow it down and restore imagination and wonder.

Visual Code is a collection of ten different patterns inspired by the symbiotic relationship of hi-tech and hi-touch, marrying images of glitch graphics and technicolor circuitry with simple textures that recall plain woven fabrics and rugs.

Based on simple textiles in shades of gray, Stitch Count™, Stitchery™ and Plain Stitch™ set the groundwork for the collection. In contrast, Hard Drive™ and Static Lines™ scramble colors, mimicking a monitor “glitch”. Bright, bold Circuit Board™ is at once precisely like wiring and vaguely like an ancient tribal motif. And finally, striking the balance are four black and white textures that recall handwoven rugs from another time and place.

Each style in Visual Code is made with 100% recycled content nylon, just one of the many steps we take toward creating a climate fit for life. Join the **#climatetakeback** movement.



CARPET PRODUCT STATIC LINES COLOR 105941 LEAD STATIC CARPET PRODUCT OVEREDGE™  
COLOR 105958 B&W OVEREDGE LVT PRODUCT DRAWN LINES™ COLOR A00907 ONYX INSTALLED ASHLAR

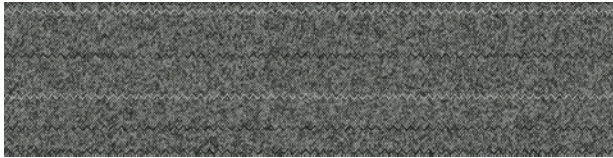




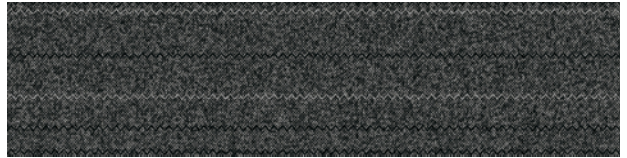
**PRODUCT** PLAIN STITCH **COLOR** 105918 GRAPHITE PLAIN  
**PRODUCT** STITCHERY **COLOR** 105934 GRAPHITE STITCHERY  
**PRODUCT** STITCH COUNT **COLOR** 105926 GRAPHITE COUNT  
**PRODUCT** HAPTIC™ **COLOR** 105956 B&W HAPTIC **INSTALLED** PATTERN BY TILE

## Plain Stitch™ Colorline

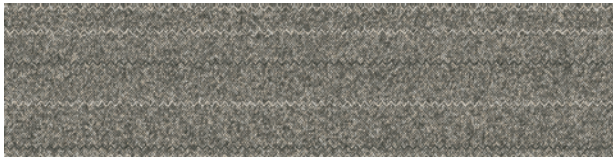
---



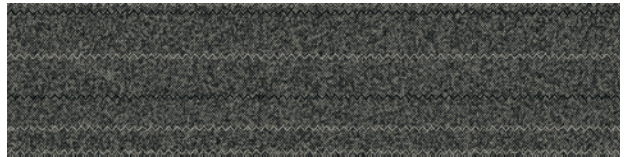
105915 NICKEL PLAIN



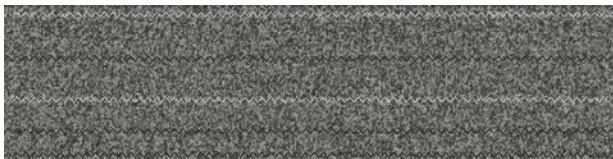
105916 IRON PLAIN



105917 GREY PLAIN



105918 GRAPHITE PLAIN



105919 FLINT PLAIN



105920 CHARCOAL PLAIN



105921 SLATE PLAIN

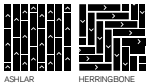


105922 BLACK PLAIN

## Specifications

---

Modular, 25cm x 1m	139250AK00
Backing System	GlasBac® Tile
Yarn Manufacturer	Aquafil
Yarn System	100% Recycled Content Type 6 Nylon
Color System	100% Solution Dyed
Construction	Tufted Pattern Loop
Preservation Protection	Intersept®
Soil/Stain Protection	Protekt <sup>2</sup> ®
Pile Thickness	0.078 in., 2.0 mm
Pile Density	7,846
Total Recycled Content	73%
Indoor Air Quality	CRI Green Label Plus #GLP0820



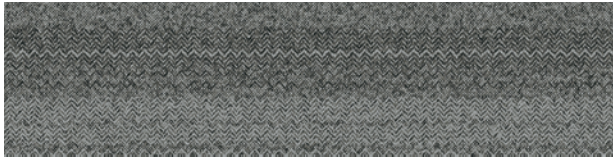




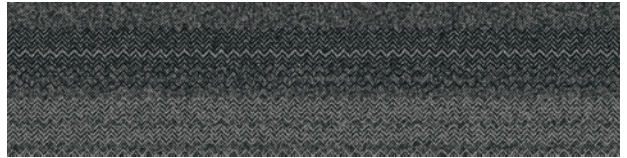


# Stitchery™ Colorline

---



105931 NICKEL STITCHERY



105932 IRON STITCHERY



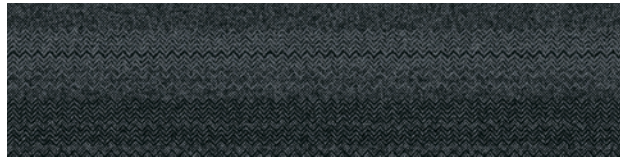
105933 GREY STITCHERY



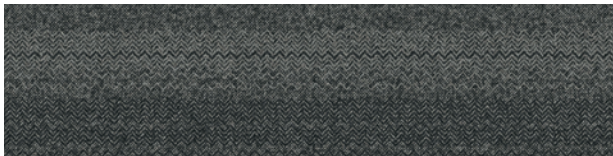
105934 GRAPHITE STITCHERY



105935 FLINT STITCHERY



105936 CHARCOAL STITCHERY



105937 SLATE STITCHERY

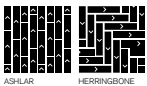


105938 BLACK STITCHERY

## Specifications

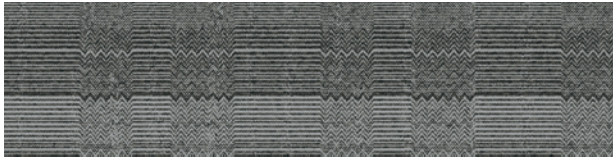
---

Modular, 25cm x 1m	139270AK00
Backing System	GlasBac® Tile
Yarn Manufacturer	Aquafil
Yarn System	100% Recycled Content Type 6 Nylon
Color System	100% Solution Dyed
Construction	Tufted Pattern Loop
Preservation Protection	Intersept®
Soil/Stain Protection	Protekt <sup>2</sup> ®
Pile Thickness	0.08 in., 2.0 mm
Pile Density	7,650
Total Recycled Content	73%
Indoor Air Quality	CRI Green Label Plus #GLP0820

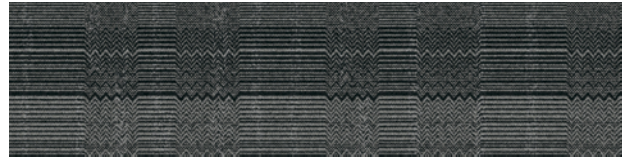


## Stitch Count™ Colorline

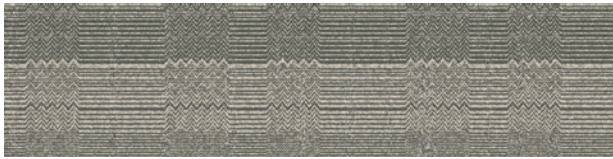
---



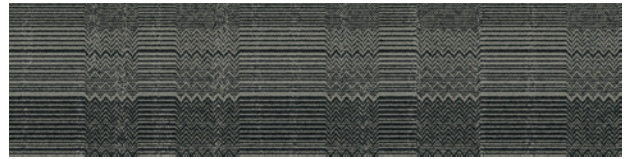
105923 NICKEL COUNT



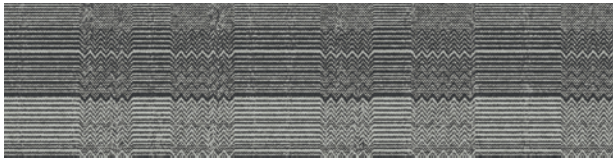
105924 IRON COUNT



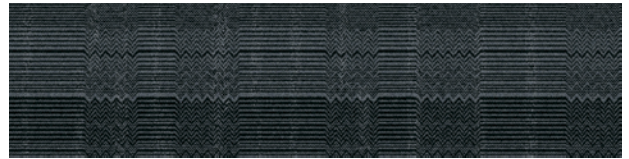
105925 GREY COUNT



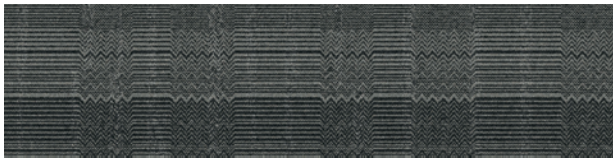
105926 GRAPHITE COUNT



105927 FLINT COUNT



105928 CHARCOAL COUNT



105929 SLATE COUNT

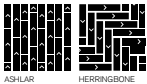


105930 BLACK COUNT

## Specifications

---

Modular, 25cm x 1m	139260AK00
Backing System	GlasBac® Tile
Yarn Manufacturer	Aquafil
Yarn System	100% Recycled Content Type 6 Nylon
Color System	100% Solution Dyed
Construction	Tufted Sheared
Preservation Protection	Intersept®
Soil/Stain Protection	Protekt <sup>2</sup> ®
Pile Thickness	0.175 in., 4.4 mm
Pile Density	5,554
Total Recycled Content	76%
Indoor Air Quality	CRI Green Label Plus #GLP0820





PRODUCT STITCH COUNT. COLOR 105927 FLINT COUNT INSTALLED ASHLAR



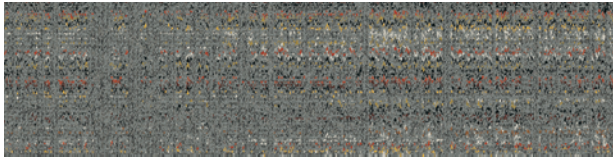


PRODUCT STATIC LINES COLOR 105942 GRANITE STATIC  
PRODUCT HARD DRIVE COLOR 105946 GRANITE HD INSTALLED ASHLAR

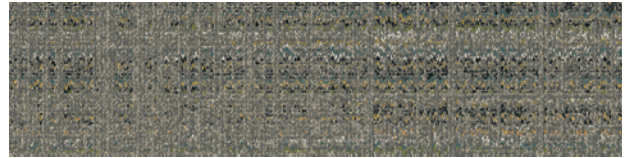


## Static Lines™ Colorline

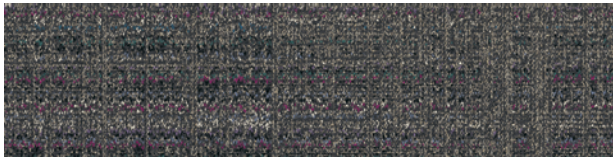
---



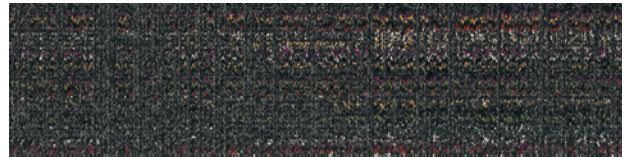
105939 STEEL STATIC



105940 PEWTER STATIC



105941 LEAD STATIC

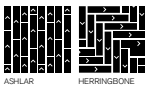


105942 GRANITE STATIC

## Specifications

---

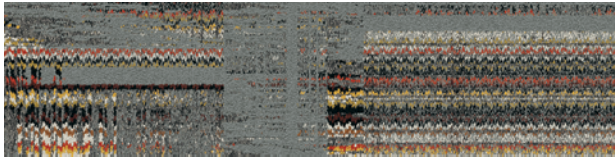
Modular, 25cm x 1m	139280AK00
Backing System	GlasBac® Tile
Yarn Manufacturer	Aquafil
Yarn System	100% Recycled Content Type 6 Nylon
Color System	100% Solution Dyed
Construction	Tufted Pattern Loop
Preservation Protection	Intersept®
Soil/Stain Protection	Protekt <sup>2</sup> ®
Pile Thickness	0.1 in., 2.5 mm
Pile Density	9,000
Total Recycled Content	75%
Indoor Air Quality	CRI Green Label Plus #GLP0820



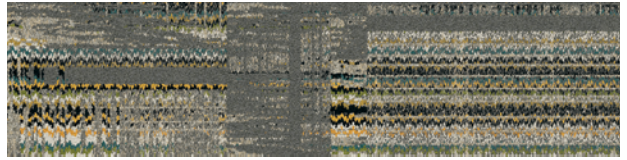
ASHLAR HERRINGBONE

## Hard Drive™ Colorline

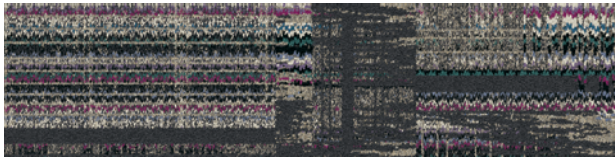
---



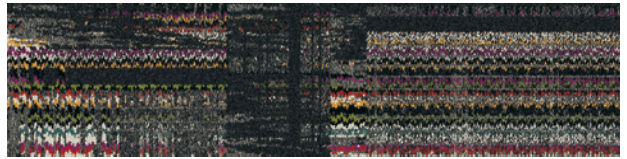
105943 STEEL HD



105944 PEWTER HD



105945 LEAD HD

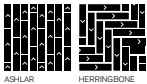


105946 GRANITE HD

## Specifications **i2**

---

Modular, 25cm x 1m	139290AK00
Backing System	GlasBac® Tile
Yarn Manufacturer	Aquafil
Yarn System	100% Recycled Content Type 6 Nylon
Color System	100% Solution Dyed
Construction	Tufted Pattern Loop
Preservation Protection	Intersept®
Soil/Stain Protection	Protekt <sup>2</sup> ®
Pile Thickness	0.124 in., 3.1 mm
Pile Density	6,968
Total Recycled Content	75%
Indoor Air Quality	CRI Green Label Plus #GLP0820





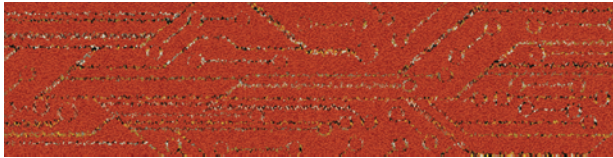


PRODUCT HARD DRIVE COLOR 105944 PEWTER HD INSTALLED ASHLAR

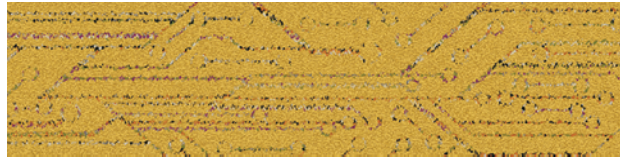


## Circuit Board™ Colorline

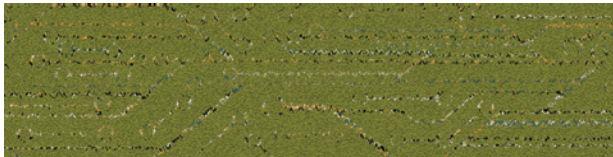
---



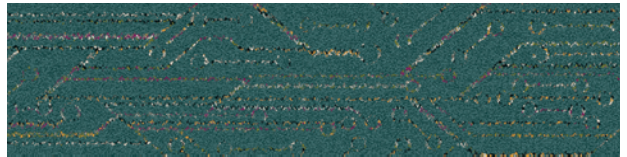
105947 ORANGE CIRCUIT



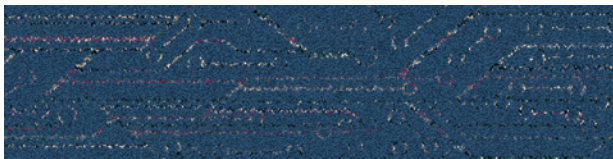
105948 YELLOW CIRCUIT



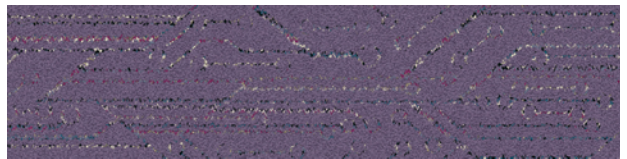
105949 GREEN CIRCUIT



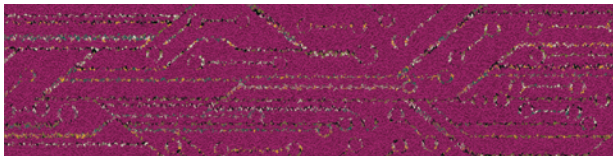
105950 TEAL CIRCUIT



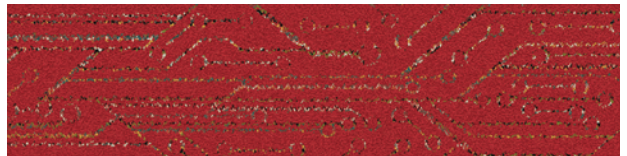
105951 BLUE CIRCUIT



105952 PURPLE CIRCUIT



105953 MAGENTA CIRCUIT

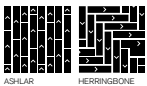


105954 RED CIRCUIT

## Specifications

---

Modular, 25cm x 1m	139300AK00
Backing System	GlasBac® Tile
Yarn Manufacturer	Aquafil
Yarn System	100% Recycled Content Type 6 Nylon
Color System	100% Solution Dyed
Construction	Tufted Pattern Loop
Preservation Protection	Intersept®
Soil/Stain Protection	Protekt <sup>2</sup> ®
Pile Thickness	0.086 in., 2.2 mm
Pile Density	9,628
Total Recycled Content	74%
Indoor Air Quality	CRI Green Label Plus #GLP0820



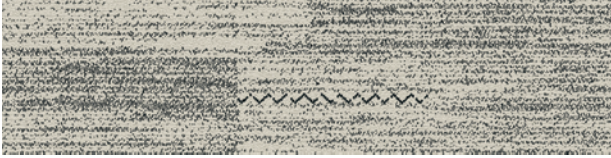




PRODUCT DARNING COLOR 105955 B&W DARNING PRODUCT OVEREDGE COLOR 105958 B&W OVEREDGE  
PRODUCT DECIBEL COLOR 105957 B&W DECIBEL INSTALLED PATTERN BY TILE

# Darning™ Colorline

---



105955 B&W DARNING

## Specifications

---

Modular, 25cm x 1m	139310AK00
Backing System	GlasBac® Tile
Yarn Manufacturer	Aquafil
Yarn System	100% Recycled Content Type 6 Nylon
Color System	100% Solution Dyed
Construction	Tufted Pattern Loop
Preservation Protection	Intersept®
Soil/Stain Protection	Protekt <sup>2</sup> ®
Pile Thickness	0.092 in., 2.3 mm
Pile Density	8,609
Total Recycled Content	75%
Indoor Air Quality	CRI Green Label Plus #GLP0820



ASH-LAR HERRINGBONE







# Haptic™ Colorline

---



105956 B&W HAPTIC

## Specifications

---

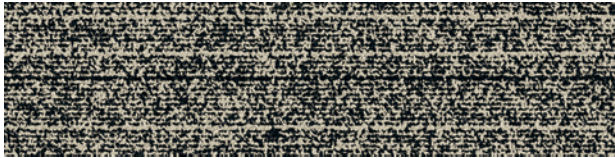
Modular, 25cm x 1m	139320AK00
Backing System	GlasBac® Tile
Yarn Manufacturer	Aquafil
Yarn System	100% Recycled Content Type 6 Nylon
Color System	100% Solution Dyed
Construction	Tufted Pattern Loop
Preservation Protection	Intersept®
Soil/Stain Protection	Protekt <sup>2</sup> ®
Pile Thickness	0.104 in., 2.6 mm
Pile Density	8,308
Total Recycled Content	75%
Indoor Air Quality	CRI Green Label Plus #GLP0820



ASHLUX

# Overedge™ Colorline

---

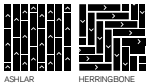


105958 B&W OVEREDGE

## Specifications

---

Modular, 25cm x 1m	126160AK00
Backing System	GlasBac® Tile
Yarn Manufacturer	Aquafil
Yarn System	100% Recycled Content Type 6 Nylon
Color System	100% Solution Dyed
Construction	Tufted Sheared
Preservation Protection	Intersept®
Soil/Stain Protection	Protekt <sup>2</sup> ®
Pile Thickness	0.306 in., 7.8 mm
Pile Density	4,941
Total Recycled Content	78%
Indoor Air Quality	CRI Green Label Plus #GLP0820



ASHLAR HERRINGBONE

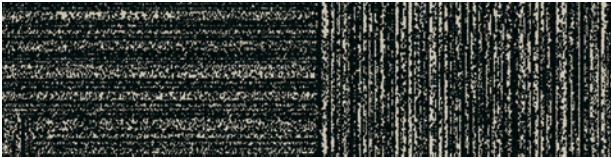


PRODUCT OVEREDGE COLOR 105958 B&W OVEREDGE INSTALLED ASHLAR



## Decibel™ Colorline

---

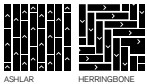


105957 B&W DECIBEL

## Specifications

---

Modular, 25cm x 1m	139330AK00
Backing System	GlasBac® Tile
Yarn Manufacturer	Aquafil
Yarn System	100% Recycled Content Type 6 Nylon
Color System	100% Solution Dyed
Construction	Tufted Pattern Loop
Preservation Protection	Intersept®
Soil/Stain Protection	Protekt <sup>2</sup> ®
Pile Thickness	0.132 in., 3.4 mm
Pile Density	6,000
Total Recycled Content	75%
Indoor Air Quality	CRI Green Label Plus #GLP0820



**Design Ideas** Below are floor layouts showing how to create the design ideas shared in several of the images featured in this brochure.



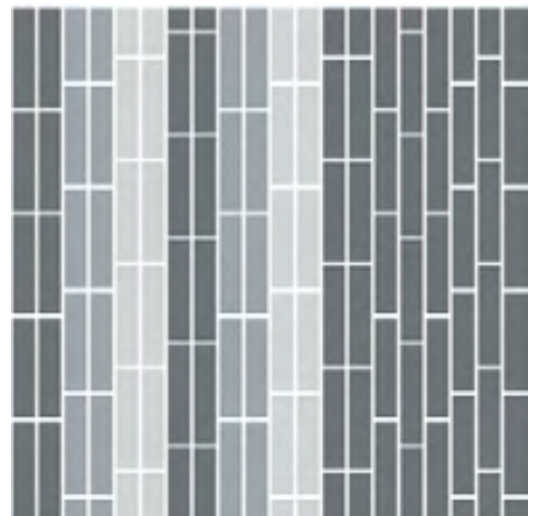
**PRODUCT** STATIC LINES **COLOR** 105941 LEAD STATIC  
**PRODUCT** CIRCUIT BOARD **COLOR** 105951 BLUE CIRCUIT  
**PRODUCT** HAPTIC **COLOR** 105956 B&W HAPTIC **INSTALLED** PATTERN BY TILE (ASHLAR)



**PRODUCT** STITCH COUNT **COLOR** 105925 GREY COUNT  
**PRODUCT** STITCHERY **COLOR** 105933 GREY STITCHERY  
**PRODUCT** PLAIN STITCH **COLOR** 105917 GREY PLAIN **INSTALLED** ASHLAR



**PRODUCT** STATIC LINES **COLOR** 105940 PEWTER STATIC **PRODUCT** HARD DRIVE **COLOR** 105944 PEWTER HD **PRODUCT** CIRCUIT BOARD  
**COLORS** 105947 ORANGE CIRCUIT, 105948 YELLOW CIRCUIT, 105949 GREEN CIRCUIT, 105950 TEAL CIRCUIT, 105951 BLUE CIRCUIT, 105952 PURPLE  
 CIRCUIT, 105953 MAGENTA CIRCUIT, 105954 RED CIRCUIT **PRODUCT** DARNING **COLOR** 105955 B&W DARNING **INSTALLED** PATTERN BY TILE (ASHLAR)

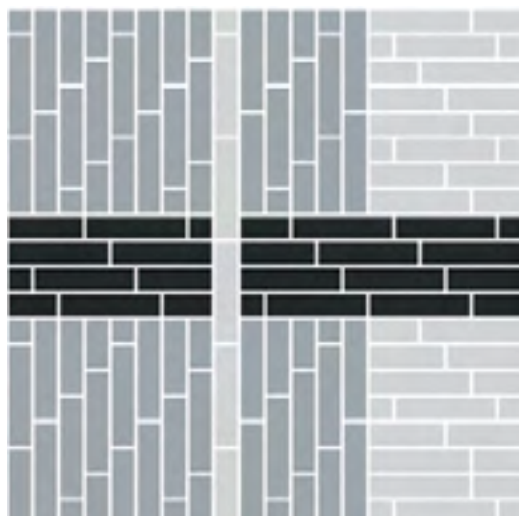
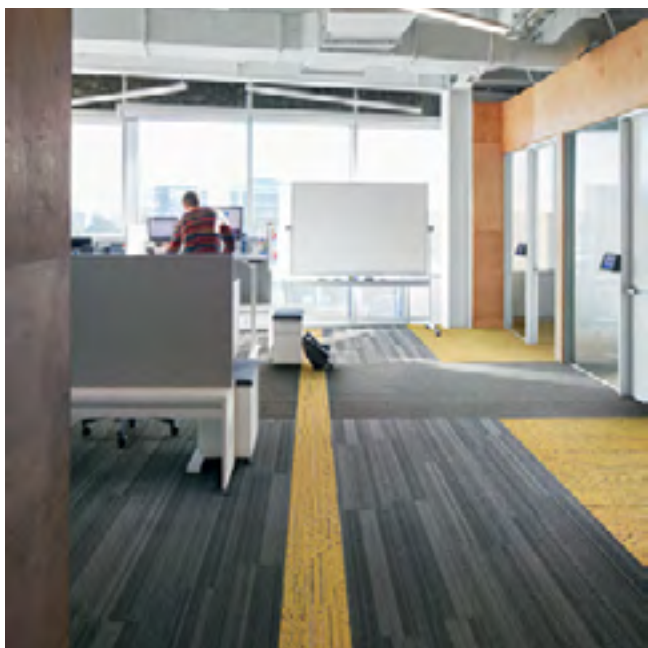


**PRODUCT** STITCHERY **COLOR** 105937 SLATE STITCHERY  
**PRODUCT** STATIC LINES **COLOR** 105939 STEEL STATIC  
**PRODUCT** CIRCUIT BOARD **COLOR** 105947 ORANGE CIRCUIT **INSTALLED** PATTERN BY TILE

**Design Ideas** Below are floor layouts showing how to create the design ideas shared in several of the images featured in this brochure.

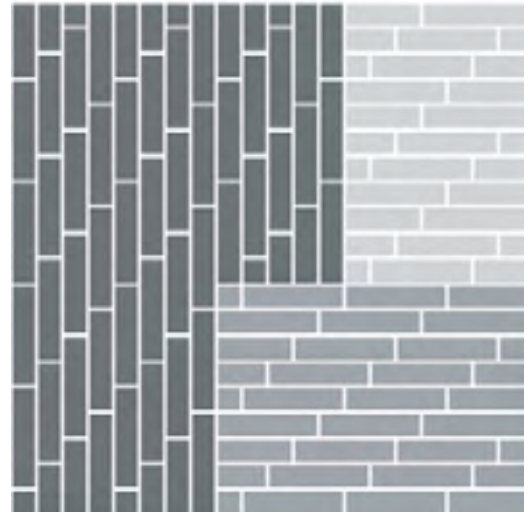


**PRODUCT** PLAIN STITCH **COLOR** 105918 GRAPHITE PLAIN **PRODUCT** STITCHERY **COLOR** 105934 GRAPHITE STITCHERY  
**PRODUCT** STITCH COUNT **COLOR** 105926 GRAPHITE COUNT **PRODUCT** HAPTIC **COLOR** 105956 B&W HAPTIC  
**INSTALLED** PATTERN BY TILE (ASHLAR)



**PRODUCT** PLAIN STITCH **COLOR** 105916 IRON PLAIN  
**PRODUCT** STITCHERY **COLOR** 105931 NICKEL STITCHERY  
**PRODUCT** CIRCUIT BOARD **COLOR** 105948 YELLOW CIRCUIT **INSTALLED** PATTERN BY TILE (ASHLAR)





**PRODUCT** DARNING **COLOR** 105955 B&W DARNING  
**PRODUCT** OVEREDGE **COLOR** 105958 B&W OVEREDGE  
**PRODUCT** DECIBEL **COLOR** 105957 B&W DECIBEL **INSTALLED** PATTERN BY TILE (ASHLAR)



**CARPET PRODUCT** STATIC LINES **COLOR** 105939 STEEL STATIC  
**CARPET PRODUCT** HARD DRIVE **COLOR** 105943 STEEL HD  
**LVT PRODUCT** STUDIO SET™ **COLOR** PEWTER A00702 **INSTALLED** PATTERN BY TILE (ASHLAR)

## Why Our Modular Flooring?



### Modular Flooring

#### *Performance and Flexibility.*

Interface's standard backing systems set the industry standard for modular performance. Tiles stay on the floor with no upcurl, no tapping and no rippling effect, yet are easy to selectively replace. Our modular carpet is easier to handle than bulky roll carpet and produces an average of just 3-4% waste compared to roll carpet's average of 14%. And it installs seamlessly with our LVT, no transition strips needed.



### Cool Floor™

*The Low Carbon Option.* Help stop climate change. ALL Interface modular flooring sold in North America is third party verified climate neutral Cool Floor. We start by using low-carbon materials and manufacturing processes, then Cool Floor zeros out all remaining greenhouse gas (GHG) emissions associated with the entire life cycle of your flooring, from raw material extraction through use and recycling.



### TacTiles®

*No Glue Installation.* Our revolutionary TacTiles installation system eliminates the need for glue, adhering tiles securely together to form a floor that "floats" for greater flexibility, easier replacement and long-term performance. The result? Less mess, less waste and virtually no VOCs, not to mention an environmental footprint that is over 90% lower than that of traditional glue adhesives.

### Samples

Order samples at [www.interface.com](http://www.interface.com). You'll receive email order confirmations, 24/7 access to order status and more. Not near a computer? You can also request samples by calling one of the numbers below.

United States 1.877.605.1500	Canada 1.866.398.3192
Brazil + 55 11 2196 0900	Latin America + 52 55 6395 5100

### [www.interface.com](http://www.interface.com)

Register at [www.interface.com](http://www.interface.com) to:

- Browse products and order samples
- View carpet in a variety of room scenes
- Browse floor designs, change colors, view as a grid or in a room, download and share
- Use our LEED Calculator
- Check order status and inventory availability
- Sign up to get the latest information on Interface products and news

### InterCircle™ Sample Return

Help us close the loop on the carpet sampling process. Through our InterCircle Sample Return program, sample materials stay out of the landfill and are re-used as samples until it is time to recycle them into new carpet. By reducing sample production material and diverting old materials from the landfill, we can reduce our overall environmental footprint.

Call 1.877.605.1500 (U.S.) or 1.866.398.3192 (Canada) to order a sample return bag with a prepaid return label.

### Third Party Certification

#### cool floor™

**Cool Floor** – Our third party verified carbon offset program zeroes out all greenhouse gas (GHG) emissions associated with the entire life cycle of your flooring.



**Environmental Product Declaration (EPD)** – A statement of product ingredients and environmental impacts over the entire life cycle of a product. A comprehensive life cycle assessment (LCA) is performed to ISO standards to develop an EPD, after which both the EPD and LCA must be third party verified.



**Sustainable Assessment for Carpet** – The only carpet sustainability standard in North America that evaluates the environmental impact of carpet for its entire lifecycle.



**CRI Green Label Plus** – An independent testing program that identifies carpet and adhesives with very low emissions of VOCs to help improve indoor air quality.



### **Intersept®**

*Mold Protection.* Our proprietary preservative, Intersept, protects our modular carpet against mold growth and odor-causing bacteria — guaranteed. Intersept treated carpet, with proper maintenance, shows no mold or bacterial growth when tested per the ASTM E2471 Standard Test Method. Intersept is EPA approved for safe use in carpet, water insoluble and contains no halogens, heavy metals, phenols or formaldehyde.



### **ReEntry®**

*Recyclable is Now a Reality.* Through our ReEntry program and partnerships with our fiber suppliers and recycling centers throughout North America, separated Type 6 and 6,6 nylon are recycled into new 6 and 6,6 nylon while separated GlasBac®, GlasBacRE and similar competitor backings are recycled into new GlasBacRE non-virgin PVC backing using our Cool Blue™ technology. The result? Products with up to 89% total recycled content, including as much as 27% post-consumer content.



### **Sustainable Choice**

*Environmental Responsibility.* More than 95% of Interface products manufactured in the Americas carry the GreenCircle Certified Environmental Facts label, which has verified that standard Interface products are manufactured using 99% renewable energy and offer a minimum of 66% and 80% total recycled content when backed with GlasBac and GlasBacRE backing respectively.

Transparency and certified sustainability leadership come standard on all Interface products, including published ingredients in HPDs (Health Product Declarations) or Declare Labels. In addition, more than 99% of our products globally have a published EPD (Environmental Product Declaration), which evaluates consistent factors based on full life cycle assessment (LCA). And, all Interface products with GlasBacRE backing are certified to the Platinum level of the NSF/ANSI 140 Sustainable Assessment for Carpet. GlasBac backed products meet the Gold level. NSF/ANSI 140 certified products contribute toward a USGBC or CaGBC LEED credit.



All product specifications reflect averages derived from product sample testing, are subject to normal manufacturing and testing tolerances and inherent pattern variances, and may be changed without notice. For more information about these and other important attributes of the product(s) described herein, including recycled content and product warranty information, please see [www.interface.com/disclaimer](http://www.interface.com/disclaimer).

Printed on 50% post consumer waste (PCW) fiber manufactured using wind power.

We have tried our very best to accurately represent product colors. However, due to the nature of printed materials, color of actual products may vary slightly. Please request a sample to see actual product color.

[www.interface.com](http://www.interface.com)

**United States Headquarters**

1503 Orchard Hill Road  
LaGrange, GA 30240  
1.800.336.0225 ext.56511

**Canadian Headquarters**

233 Lahr Drive  
Belleville, ON K8N 5S2  
1.800.267.2149 ext.52128

**Brazilian Headquarters**

Rua Surubim, 577 - Conjuntos  
73/74 7º Andar  
04571-050 - São Paulo - SP  
+ 55 11 2196 0900

**Latin American Headquarters**

Montes Urales # 415 Piso 6  
Col. Lomas de Chapultepec  
México City, D.F. 11000  
Mexico  
+ 52 55 6395 5100

CIM # IFS00804 06/2018



Climate change is undeniable. And reversible. Our mission is to prove it.  
**Join the #ClimateTakeBack and help create a climate fit for life.**